

## A Celebration for Wesley Day



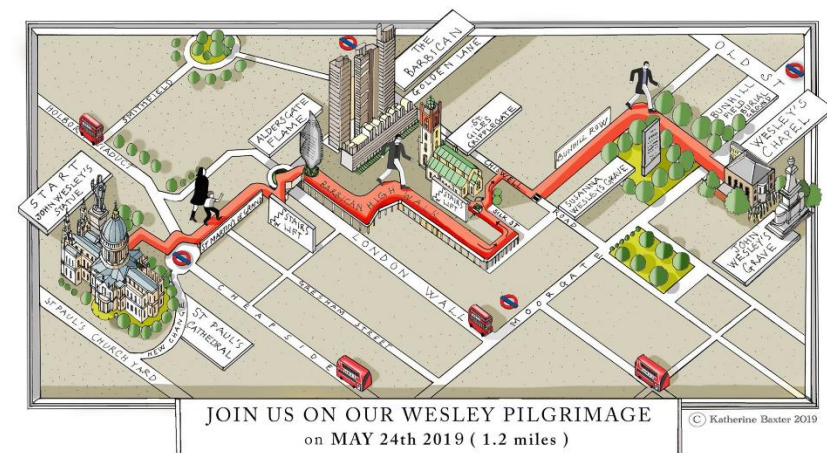
John Wesley (1703-1791) was a minister, he worked in a church. He is most famous for founding a church called the Methodist Church.


You can visit the house he lived in to see how people lived in the past. At the moment we are closed but you can use our activity sheets to find out more about John Wesley's House and how people lived in the 18<sup>th</sup> century (1700-1799). You can see all the rooms in the house using our [virtual tour](#)

Wesley Day is celebrated by Methodists as the day when John's faith became about his heart and soul, not just his mind. His 'conversion' happened on 24<sup>th</sup> May, 1738. In this trail you'll be able to join in celebrating Wesley Day wherever you are!

To celebrate Wesley Day, people usually get together for a special service at St Paul's Cathedral, then do a walk together, called a pilgrimage, from St Paul's Cathedral to John Wesley's grave, which is behind Wesley's Chapel. The picture below shows the route used.

This year we can't do what we usually might so we are celebrating in a different way! Our virtual open day includes this trail, the Curator's Picks of objects linked to Wesley Day, and recipes for the food we'd usually have for you to sample during an open day. Have a go at making them at home!



Can you find? 

Can you find different objects in your house or garden that begin with, or look like, the letters that spell out John Wesley's name? Below are the objects collected by our Learning and Community Engagement officer at her home, and objects that are currently in John Wesley's House on display. More information about John Wesley's House can be found on our [virtual tour](#).

J O H N



Jasmine flower, O shape, Hand (of a clock), Nail

J O H N



John Wesley bust, O shape from replica glasses, Hat, Night time photo

W E S L E Y



Whale toy, Earrings, Scales, Lamp, Earrings, Yellow blanket

W E S L E Y



Wallpaper, Electrical machine, Stairs, Light, Electrical machine, Yellow bricks from John Wesley's House

## Jumbled rooms!

Some of the rooms at John Wesley's House have got in a muddle! Click the links and complete puzzles to put the rooms back in order again.

Kitchen

<https://www.jigsawplanet.com/?rc=play&pid=1b5d5ca614ff>



Front parlour <https://www.jigsawplanet.com/?rc=play&pid=23341b873c25>



John Wesley's bedroom

<https://www.jigsawplanet.com/?rc=play&pid=3b11aff4addc>



## Spreading the Word

John Wesley's conversion inspired him to spread the word about Methodism. He travelled all over the country, as well as abroad, to do this. Most of this travel was done on horseback, remember cars and trains hadn't been invented. It is said John Wesley travelled over 250,000 miles on horseback throughout his life. Have a go at making a horse mask using the template below and take it on your own journey:





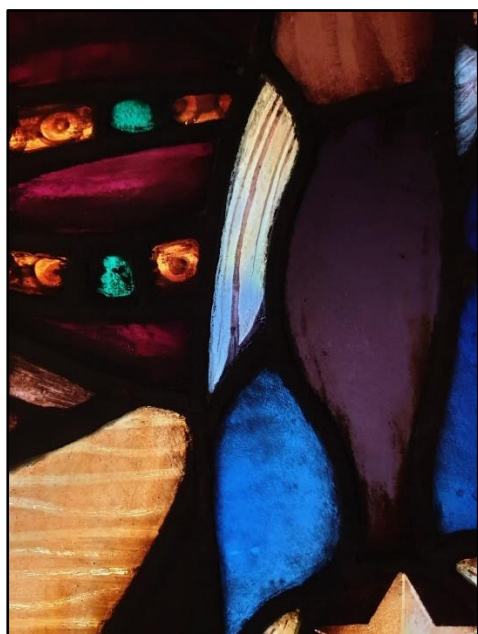
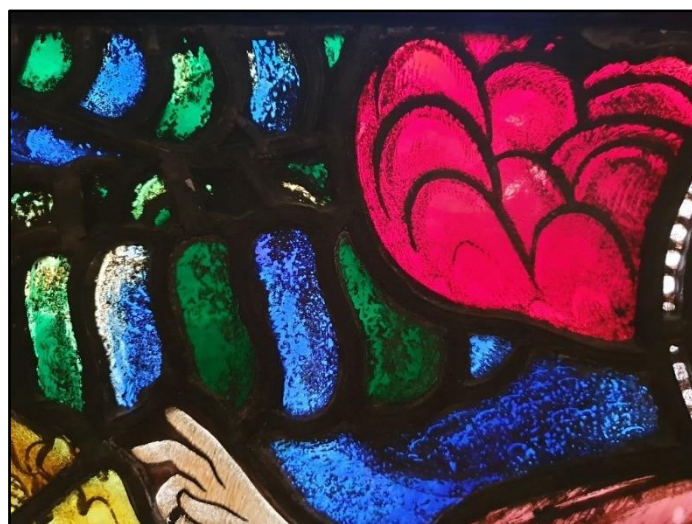
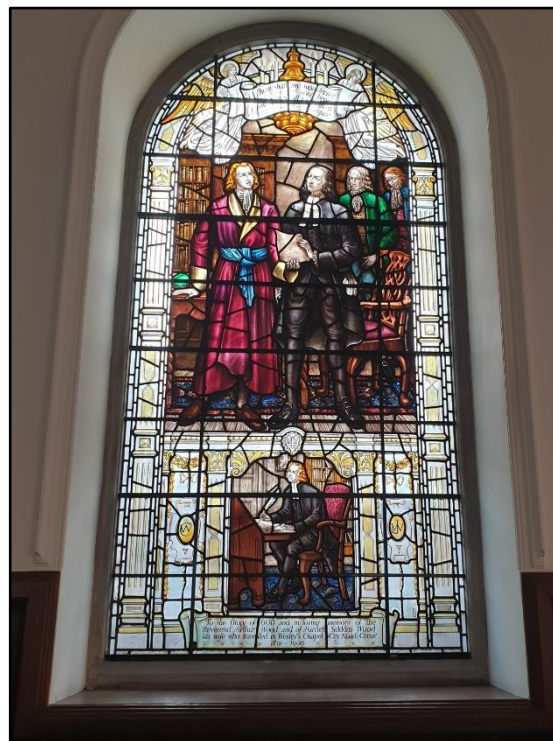
## Stained Glass Windows

There are lots of beautiful stained-glass windows at Wesley's Chapel. One of them, shown here, celebrates John and Charles Wesley's conversion, the time we remember on Wesley Day.

Most stained-glass windows tell a story. On the next page some of the features of this window are explained.

Why not have a go at designing your own? It could tell a story that's important to you, or just be a beautiful design.

If you have tracing paper, you can use it to create something to hang in your window using felt tip pens. If not, just use normal paper and colour it in!





## Conversion Window from Wesley's Chapel

They are looking up, showing positivity and that they are looking to God.

By looking at the furniture (the bookcase, chair and carpet) we can tell the scene is not in a Chapel. The scene is set at friend's house. He is one of the two people in the background.

This part shows Charles (red) and John (in black) singing a hymn. They are celebrating their conversion.

This is Charles Wesley writing a hymn. Charles was John's brother and also a founder of Methodism. He was a famous hymn writer so featuring him doing this helps tell that part of the story.

These two oval shapes include the initials JW and CW, for John and Charles.

